



INKKLINGS

Bulletin of Interpretive Ideas

June 2007 Volume 7, Issue 2

Interpretive Signs:

Looking to the Future

A new sign for your new wetland has been funded. Before starting, ask yourself if this sign could be the springboard for future signs. If so, you may wish to consider the following:

1. Developing an Interpretive Theme for Your Site. An interpretive theme for the site keeps efforts focused on site specific, related topics. Future signs will be tied to the theme and ensure that your property tells its unique story.

An example of an interpretive theme might be:

Will County Park was created by geological, climatic and human influences.

A specific sign fitting this theme might begin:

This wood lot is a remnant of forests that once covered our region.

The content of this sign covers the climatic conditions that allowed the formation of eastern deciduous forest, the settlement and clearing of Will County and how this woodlot served the farmer.

Your wetland sign can relate to the theme by tying it to the geological influences of its Ice Age formation.

Themes avoid broad generic signs that could apply to almost any site ("Oak Trees" or "Wetlands", for example).

2. Developing a Sign Template. Develop a template for your sign that will guide the look of future signs. A template presents a standardized appearance for your agency. Sign material, colors, layout, fonts and logo (style and placement) are determined. Templates create an agency identity and prevent having a clutter of sign styles.

By spending the extra time on the first sign, you ensure that future signs will do their job of interpreting and representing your agency.

Current Project List

- **Interpretive Sign Design, Indiana Department of Natural Resources.**

Current projects include:

Prophetstown SP
Clifty Falls SP
Mounds SP
Lincoln SP
Harmonie SP
McCormick's Creek SP
Spring Mill SP
Brown County SP
Brookville Reservoir
Charlestown SP
Fort Harrison SP
Harmonie SP
Patoka Reservoir
Shakamak SP
Summit Lake SP
Ouabache SP
Potato Creek SP
Versailles SP
Lieber SRA
Shades SP
Turkey Run SP

- **Interpretive Sign Design, The Nature Conservancy, Blue River Project, Laconia, IN**

- **Interpretive Sign Design, Champaign County Forest Preserve District, Champaign, IL**

- **Interpretive Sign Design, Park Forest Parks Dept., Park Forest, IL**

- **Interpretive Sign Design, Portage Parks Dept., Portage, IN**

- **Interpretive Sign Design, Westfield Parks, Westfield, IN**

- **Interpretive Sign Design, Wabash and Erie Canal, Delphi, IN**



An interpretive theme for Pokagon State Park is: *Pokagon State Park's natural features are classic examples of the northern lakes region.*

This sign covers the geological formation of Lake Lonidaw and the rare plants and animals in this ecosystem.



Visit our website www.interpretiveideas.com

Lise Schools, Owner

lise@interpretiveideas.com

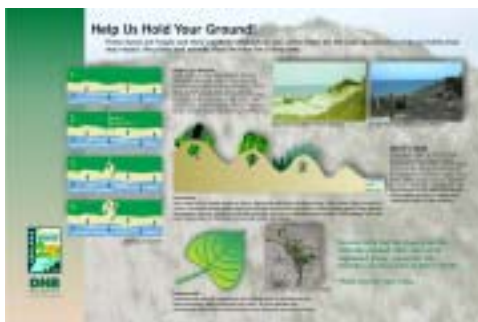
517/347-0861

Okemos, MI 48805-0355

P.O. Box 355

Interpretive Ideas

INKINGS



An interpretive theme for Indiana Dunes State Park is: *Sand dunes are unique to our area and are dynamic in nature.*

This sign covers the dune succession, fragility and protection.



An interpretive theme for Prophetstown State Park is: *Glaciers covered the bedrock, altered pre-existing features and created new ones.*

This sign covers the breaching of glacial Lake Maumee and the formation of the Upper Wabash River valley.

Notice the consistent template for each example.