



# Inklings

Bulletin of Interpretive Ideas

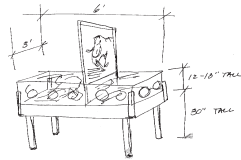
September 2002 Volume 2, Issue 3

## Anatomy of an Exhibit

Many players are involved in the creation of an exhibit. In the case of the new mastodon exhibit at Lilly Nature Center in Celery Bog (W. Lafayette IN Parks and Recreation), three different companies and two agencies were involved.

### Current/Recent Project List

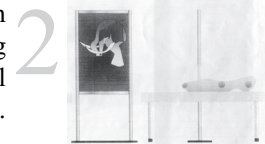
- Interpretive Panel Design, Fish Creek Council, Hamilton, IN
- Interpretive Panel Design, Miller-Showers Park, Bloomington Parks and Recreation, Bloomington, IN
- Interpretive Panel Design, Turkey Run State Park, Marshall, IN
- Interpretive Plan, Bluhm County Park, LaPorte, IN
- Mastodon Exhibit Design, Celery Bog Nature Center, W. Lafayette Parks and Recreation, W. Lafayette, IN



Original Concept

1 *W. Lafayette Parks and Recreation* approaches *Interpretive Ideas* with the original concept and the request to serve as project manager. The exhibit concept includes a collection of mastodon bones in a touchable, protected display.

*Interpretive Ideas* contacts *Omnitec*, an exhibit firm in Lansing, Michigan. Taking the concept, *Omnitec* designs the physical structure of the exhibit.



Design



Bone Collection

3 *Interpretive Ideas* researches and writes the text. *Purdue University* faculty (who have managed the bone collection) and *W. Lafayette Parks and Recreation* review the text.

*Corvus Art* of Kalamazoo, Michigan is contacted to provide artwork for the exhibit. Additional graphics are generated by *Interpretive Ideas*.



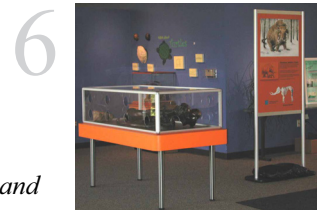
Mad Bull by Amelia Hansen, *Corvus Art*



Panel

5 *Omnitec* takes the text, artwork, and layout and has the large panels printed. The exhibit case is built by *Omnitec*.

The finished exhibit is delivered and the mastodon bones installed on site by *Interpretive Ideas* and *W. Lafayette Parks and Recreation* staff.



Completed Exhibit

Throughout the exhibit's development, *W. Lafayette Parks and Recreation* and *Purdue University* provided review and input.

Each company enjoyed the creative challenge that the mastodon exhibit posed. Challenges included: How to paint a realistic portrait of an animal that no one has seen alive. How to make a display case strong enough to protect and carry the weight of mastodon bones, while being touchable and portable. How to connect visitors to a long ago time and relate the exhibit to Celery Bog today. The end result is the collaboration of many skills.

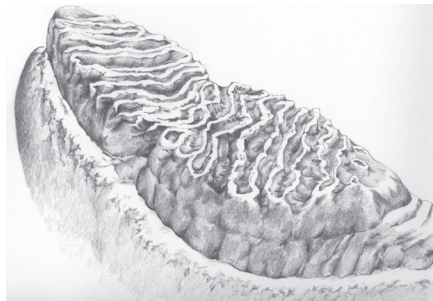
**Inklings**  
Interpretive Ideas  
P.O. Box 355  
Okemos, MI 48805-0355  
517/347-0861  
schools@voyager.net  
Lise Schools, Owner

## Meet Amelia Hansen

Interpretive Ideas has been incorporating the artwork of Amelia Hansen of **Corvus Art**. Amelia's accomplishments include illustrations for numerous books (*Atlas of Breeding Birds of Michigan*, *The Book of Swamp and Bog*, and *Wildlife of Pennsylvania and the Northeast*). In addition to pen and ink drawing, Amelia also works with watercolor and pencil.

In the recent Interpretive Ideas mastodon exhibit (see related article), Amelia created the large painting of a mastodon. The exhibit appears at the Lilly Nature Center in Celery Bog (W. Lafayette IN Parks and Recreation). Her painting of the mad bull is a hook, drawing people to the exhibit. Its emotion gives life to an extinct animal. Amelia also provided a pen and ink of a mother mastodon and calf, and pencil sketches comparing mastodon and mammoth teeth.

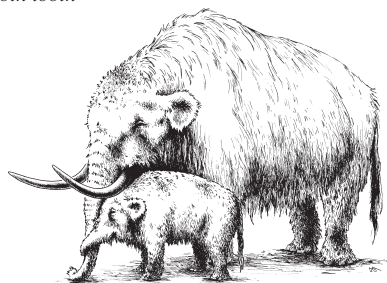
Look for Amelia Hansen's work in future Interpretive Ideas signs and exhibits.



*Mammoth tooth*



*Mastodon tooth*



*Mastodon female and calf*

## Inklings Available in pdf Format

Let us know if you would prefer to receive **Inklings** electronically as a pdf file. Send your request via email to: [schools@voyager.net](mailto:schools@voyager.net) and we'll add your name to our email list and remove it from the hard copy list.